



COMFORT **LIFT**TM



POWER LIFT CHAIRS

I. INTRODUCTION..... 4

II. SAFETY..... 5

III. YOUR SERTA PERFECT LIFT CHAIR 8

IV. ASSEMBLY/DISASSEMBLY..... 10

V. OPERATION..... 12

VI. BASIC TROUBLESHOOTING 14

VII. CARE AND MAINTENANCE 15

SAFETY NOTICE

All Serta Lift Chairs provide for state-of-the-art features and components to provide safety, ultimate comfort and longevity with proper care. Before using your new Serta Perfect Lift Chair or Serta ComfortLift Chair for the first time, it is important to know and understand all information contained in this manual. If there are any parts that are not understood, please call your authorized Serta Perfect Lift Chair, or Serta ComfortLift Chair Dealer. Failure to follow warnings, instructions and notes in this manual can result in personal injury, or product damage voiding the product warranty.

PURCHASER'S AGREEMENT

Upon acceptance of delivery of this product, you promise that you will not change, alter, or modify this product or remove or render inoperable or unsafe any guards, shields, or other safety features of this product; fail, refuse, or neglect to install any retrofit kits from time to time provided to enhance or preserve the safe use of this product.

SHIPPING AND DELIVERY

Before using your lift chair for the first time, please be sure your delivery is complete as some components may be individually packaged. If you do not receive a complete delivery, please contact your authorized provider or dealer immediately. Where damage has occurred during transport, either to the packaging or content, please contact the delivery company responsible.

MOTOR VEHICLE TRANSPORT

Use precautions to properly secure your product. If you will be transporting your lift chair in a motor vehicle, individual components should be secured against slipping. The lift chair itself must also be secured against slipping (a possible hazard during vehicle braking).

Please take a minute to review the important safety symbols below that will appear throughout this manual. Read and understand completely for safe operation of your new Serta Perfect Lift, or Serta ComfortLift Chair.



WARNING! Indicates a potentially hazardous condition/situation. Failure to follow designated procedures can cause either personal injury, component damage, or malfunction. On the product, this icon is represented as a black symbol on a yellow triangle with a black border.



MANDATORY! These actions should be performed as specified. Failure to perform mandatory actions can cause personal injury and/or equipment damage. On the product, this icon is represented as a white symbol on a blue dot with a white border.



PROHIBITED! These actions are prohibited. These actions should not be performed at any time or in any circumstances. Performing a prohibited action can cause personal injury and/or equipment damage. On the product, this icon is represented as a black symbol with a red circle and red slash.

Please fill out the following and save for future reference:

Serta Perfect Lift/Serta ComfortLift Provider/Dealer: _____
Address: _____
Telephone: _____
Purchase Date: _____

NOTE: This owner's manual contains the most current specifications and product information available at the time of publication. Lifestyle Solutions, Inc. reserves the right to update this document as necessary. There is a possibility that the changes may reflect slight variations from the illustrations and explanations from the product you have purchased.



SERTA PERFECT LIFT CHAIR/SERTA COMFORT LIFTCHAIR SAFETY SYMBOLS

The symbols below represent labels used on the Serta Perfect Lift Chair and Serta ComfortLift to identify warnings, mandatory actions, and prohibited actions. It is very important for you to read and understand these symbols completely. Do not remove these labels from your product. Please note that not all of the symbols may be used on your lift chair model.



Pinch/Crush Points Hazard! Do not place objects or appendages in the path of moving parts.



Electrical Hazard!!!



This product has been tested and complies to IEC 60601-1-2.



Read and follow the information in the owner's manual.



Maximum allowable weight capacity



Do not connect an extension cord to the AC/DC converter or the battery charger.



Removal of grounding prong can create electrical hazard. If necessary, properly install an approved 3-pronged adapter to an electrical outlet having 2-pronged plug access.



Battery door location.



Do not place objects under lift chair. Make sure area is clear of obstructions, including pets and small children, during operation.



Do not place objects under the footrest when lift chair is in fully reclined position. Make sure area is clear of obstructions, including pets and small children, during operation.



Do not cover or place the external transformer under the chair. Keep in an open, well-ventilated area free from foreign material and away from possible pinch points.



Class II Equipment



Indoor Use Only. Avoid exposure to rain, snow, ice, salt, or standing water. Maintain and store in a clean and dry environment.



Degree of protection against electric shock.



Properly dispose of all electronic components, including the external transformer, hand control, batteries, actuator motors, and wiring. Contact your authorized Serta Perfect Lift Chair dealer or provider for more information.



Green LED on transformer indicates power to the unit is on.



MANDATORY! Read and follow the information provided in this owner's manual before attempting to operate your Serta Perfect Lift Chair or ComfortLift for the first time.

Please recognize there will be certain situations, including some medical conditions, that will require practice operating the lift chair in the presence of a trained attendant. A trained attendant may be a family member or health care professional specially trained in assisting you with performing various daily living activities while safely operating a Serta Lift chair.

Below are some precautions, tips, and other safety considerations that will help you become familiar with operating the lift chair safely.

MODIFICATIONS

DO NOT modify, add, remove, or disable any feature, part, or function of your Serta lift chair. Unauthorized modifications may lead to personal injury and/or product damage and may also void your product's warranty.

WEIGHT LIMITATIONS

Your lift chair is rated for a maximum weight capacity. Please refer to the specifications table for this limit.



MANDATORY! Stay within the specified weight capacity of your lift chair. Your provider will not be held responsible for injuries and/or product damage resulting from failure to observe weight limitations.

The scissor and lift mechanisms are labeled to show pinch/crush point hazards on your Serta lift chair. Keep clear of these areas and make sure the path of motion is unobstructed. See figure 3.1 for pinch/crush point locations.



WARNING! Do not place objects or appendages in the path of ANY moving parts.

Degree of Protection/Mode of Operation

- Class II equipment/Type B protection against electric shock
- Degree of protection against the ingress of solid/liquids—IPX0
- Mode of operation—Maximum Duty Cycle: 2 min. ON/18 min. OFF

Storage and Operation

- Temperatures Transportation or storage: -104°F/-75°C to 158°F/70°C
- Operation: 50°F/10°C to 104°F/40°C

Electromagnetic and Radio Frequency Interference (EMI/RFI)



WARNING! Laboratory tests have shown that electromagnetic and radio frequency waves can have an adverse effect on the performance of electrically-powered devices, such as lift chairs.

Electromagnetic and Radio Frequency Interference can come from sources such as cellular phones, mobile two-way radios (such as walkie-talkies), radio stations, TV stations, amateur radio (HAM) transmitters, wireless computer links, microwave signals, paging transmitters, and medium-range mobile transceivers used by emergency vehicles. In some cases, these waves can cause unintended movement or damage to the control system of electrically-powered devices. The Serta lift chair user can help prevent electromagnetic interference by maintaining a minimum distance between portable and mobile RF communications equipment. It is recommended that at least 9 feet (3 meters) of distance be maintained between the lift chair and any handheld equipment emitting 10 W or more of output power. Refer to the manufacturer's literature for the handheld device to determine the maximum output of that device.

Every electrically-powered device has an immunity (or resistance) to EMI. The higher the immunity level, the greater the protection against EMI. Per EMC standards, this product has passed immunity testing and is rated as a Group 1, Class B product, meaning the lift chair uses RF energy only for its internal function. Therefore, its RF emissions are very low and are not likely to cause any interference in nearby electronic equipment, making the lift chair suitable for use in all establishments, including domestic establishments and hospitals.



WARNING! Be aware that cell phones, two-way radios, laptops, and other types of radio transmitters may cause unintended movement of your electrically-powered device due to EMI. Exercise caution when using any of these items while operating your Serta Perfect Lift/ComfortLift lift chair.



WARNING! The addition of accessories or components to the lift chair can increase the susceptibility of the chair to EMI. Do not modify your lift chair in any way not authorized by your provider.

WARNING! Your lift chair itself can disturb the performance of other electrical devices located nearby, such as alarm systems.

NOTE: If unintended motion occurs, discontinue use of the lift chair. Contact your authorized provider to report the incident.

BODY COMPONENTS

Lift chairs are equipped with several frame and electrical components. Typically, frame (or body) components include a removable back pad*, removable chaise pad*, footrest, leg levelers, a lift mechanism, and scissor mechanisms. The electrical components include the external transformer, hand control, and batteries(not included). Refer to figure 3.1 and note that the illustrations and options listed may not reflect the type of lift chair that you own.

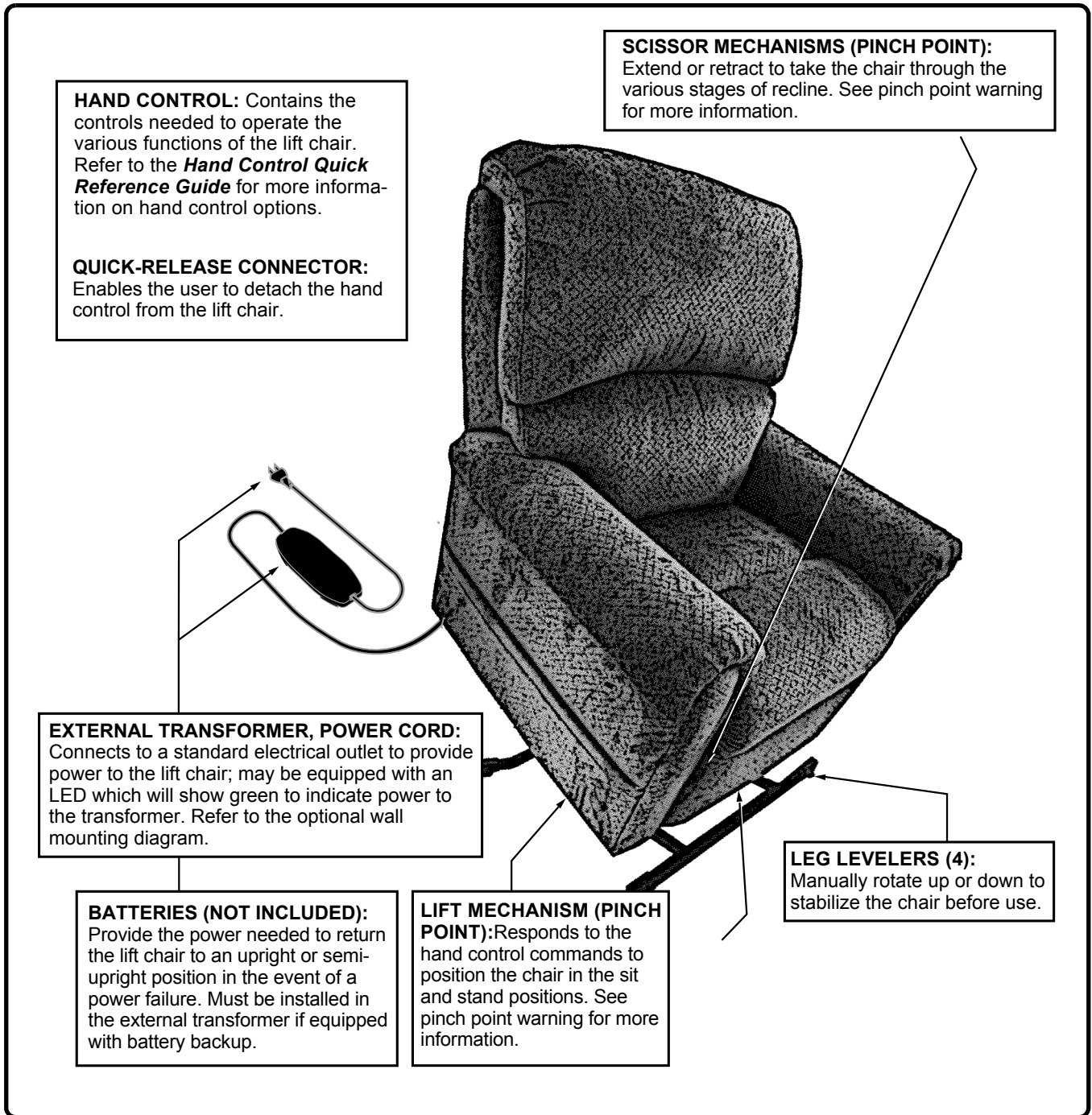


Figure 3.1 Lift Chair Main Components



WARNING! Pinch/Crush Points Hazard! Be aware that the lift mechanism and scissor mechanisms are a pinch point on the lift chair. Keep the following items and similar objects clear of these points when operating the lift chair:

- appendages
- small children
- pets
- wires
- oxygen tubes
- loose items, including but not limited to clothing and blankets
- electrical power cords

ELECTRICAL COMPONENTS

Your lift chair is equipped with a low voltage DC electrical system that reduces the standard household alternating current of 100V AC - 240V AC to direct current (24/39V DC). The electrical components include the external transformer, batteries (not included), and hand control. Keep these areas free from moisture at all times.



WARNING! Keep all electrical components free from moisture at all times to prevent shock and/or electrical hazard.

BATTERIES:

Provide the power needed to return the lift chair to an upright or semi-upright position in the event of a power failure. The batteries (not included) must be installed into the external transformer. See IV. "Assembly/Disassembly."

Your lift chair will require some light assembly before initial use. It may also require disassembly to make servicing the chair more convenient.

LIFT CHAIR SETUP

All Serta lift chair models are shipped with the backs off unless setup by your dealer or provider. Please see instructions below diagram.

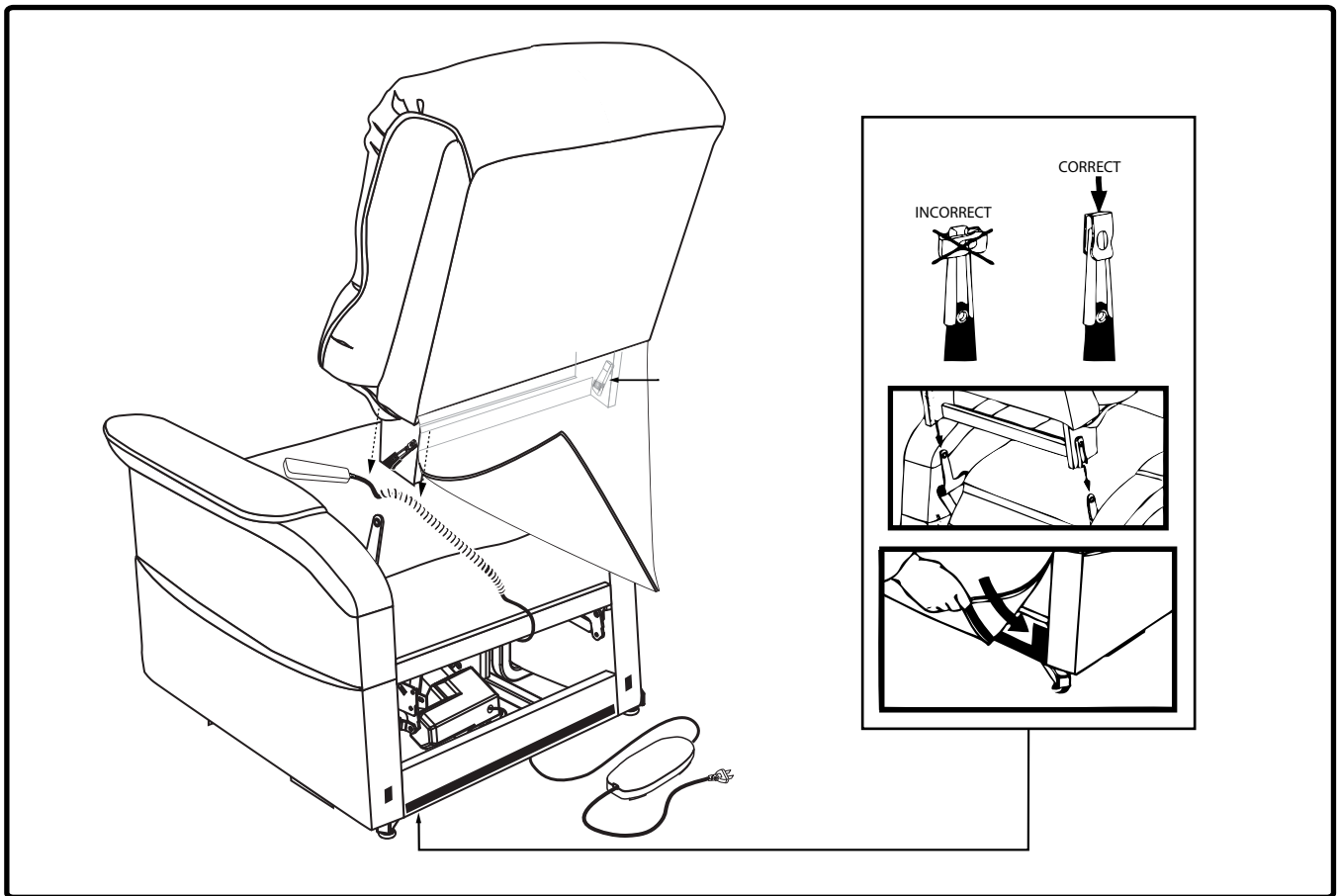


Figure S.2 Chair Assembly

1. Check that the locking clip on the back of the chair is in the **vertical** position. Reposition if necessary.
2. Position the hand control and cable over the chair base, then slide the back onto the base. (KD clips may be located on either side of the lift chair.)

NOTE: Depending on chair width, it may be necessary to slide on one side of the back at a time. If this is the case, level the chair-back before pressing down to lock into position.

3. Push firmly on the top of the back to lock into position. You must hear a click from each side of the chair to ensure the back is locked in properly. NOTE: Pull up on the chair-back to ensure that it is locked in place.

NOTE: Pull up on the chair-back to ensure that it is locked in place.

BACKUP BATTERY INSTALLATION

Your Serta Perfect Lift Chair/Serta ComfortLift lift chair comes equipped with a battery backup system that will activate during a power failure. The backup system is powered by two 9V batteries (not included) that need to be installed into the external transformer. Follow these steps to install the batteries:

1. Unplug the external transformer power cord from the electrical outlet.
2. Open the marked battery door on the external transformer.
3. Install two 9V Alkaline batteries into the external transformer (Fig. S.3).
4. Replace the battery door.

NOTE: Always make sure the external transformer is equipped with two fresh 9V batteries, since the battery backup system does not recharge itself. Fresh batteries are defined as 9V alkaline batteries that are replaced every time the battery backup system is activated during a power failure, or once a year if the battery backup system has not been activated.

NOTE: If the lift chair is not in use for an extended period of time, remove the batteries from the external transformer. The lift chair will draw power from the batteries even when it is not in use.

PLACEMENT OF YOUR SERTA PERFECT LIFT CHAIR / SERTA COMFORTLIFT CHAIR

Placement of your lift chair should be near a convenient electrical outlet and on a level surface. (NEVER USE EXTENSION CORDS UNLESS CONNECTED TO A UL COMPLIANT POWER BAR WITH AUTOMATIC CIRCUIT BREAKERS)

Lift chairs are heavy. We recommend that at least two people position your chair in order to avoid injury when lifting. Follow these steps to locate your chair in a safe manner:

1. Place the back of the chair approximately 30 inches (76 cm) from the nearest obstruction or wall with the chair in the seated position. This distance is approximate and may vary by model number.
2. Adjust the leg levers if necessary as shown in figure S.2
3. Install (2) AA Alkaline Batteries into the transformer battery compartment. (Batteries not included)
4. Place the external transformer on the floor clear of any potential obstructions in an open, well ventilated area. The unit may also be wall-mounted. (See figure S.XXX)
5. Position the low voltage connection cable in a manner that it will not be pinched when the chair is in motion.
6. Connect the low-voltage cable to the external cable. The fittings are unique to avoid making any incorrect connections
7. Plug the cord from the external transformer directly into a nearby electrical outlet NOT USE AN EXTENSION CORD!

NOTE: If there are any problems discovered during this process, STOP IMMEDIATELY and contact your authorized Serta Perfect Lift Chair/Serta ComfortLift dealer/provider. To avoid personal injury, or product damage, do not plug the unit into an electrical outlet until the problem is resolved. Electrical problems should only be addressed by qualified service technicians.

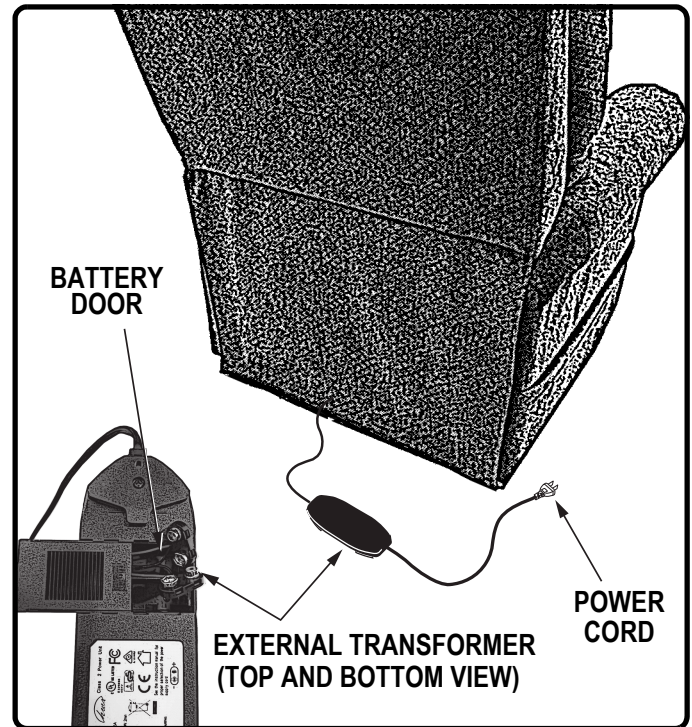


Figure S.3 Lift Chair Battery Backup Location

OPERATION PRECAUTIONS

Please use the following precautions during the operation of your lift chair. Read and follow these precautions carefully in order to ensure safe lift chair operation and to prevent injury and/or product damage.

- Plug the power cord directly into a nearby electrical outlet. **NEVER use an extension cord!**
- Do not place anything on top of or near the external transformer, especially anything containing beverages.
- When the external transformer box or hand control requires cleaning, **unplug the power cord from the electrical outlet** and use a clean, dry cloth or lightly dampened cloth. Allow time to become completely dry before plugging the power cord back into the electrical outlet.
- Periodically check the hand control and all power cords for visible damage. Keep the hand control and transformer away from all heated surfaces.
- Ensure the hand control is out of the way before sitting in the chair.
- Keep children and pets away from all moving parts when operating the lift chair.
- Do not allow children to play on or operate the lift chair. Only the intended user should operate the lift chair.
- Keep the hand control locked or utilize the quick-disconnect feature on the standard hand control when the Serta lift chair is not in use to prevent unintended operation of the chair.
- Avoid pinch points, such as the lift and scissor mechanisms. Keep hands and feet clear of these areas. Always leave the lift chair in an upright and closed position when not in use.
- NEVER sit or stand on the footrest.
- NEVER “drop” into the lift chair when sitting if it is in a partially raised position. This can result in permanent damage to the chair.



PROHIBITED! Do not place objects under the lift chair. Make sure area is clear of obstructions, including pets and small children, while in operation.

WARNING! Prevent the risk of electrical shock, fire, falls, and/or being pinched. Follow all instructions and precautions provided.



WARNING! Prevent potential equipment damage! Do not place the external transformer under the lift chair.

WARNING! Do not cover the external transformer. Keep the transformer in an open, well-ventilated area free from foreign material/debris to ensure proper operation.

HAND CONTROL OPERATION

The Hand Control that comes with every Serta Perfect Lift Chair and every Serta ComfortLift Chair is designed for simplicity, convenience and long life. Please refer to the Hand Control Guide for additional information.



WARNING! NEVER lean on or apply downward force to the chair-back when the lift chair is in the fully reclined position. Doing so may cause the lift chair to tip, resulting in personal injury and/or product damage.

WARNING! NEVER use the footrest as a seat, or for purposes outside its intended use. Doing so could cause instability in the lift chair and place undue stress on lift chair components, resulting in personal injury and/or product damage.

WARNING! Be sure to lock or disconnect the hand control when the lift chair is not in use.

Follow these simple steps to properly sit in your chair:

1. Make sure that the Serta Perfect Lift Chair/Serta ComfortLift Chair is in the standing position.
2. Back into the chair and sit in the center of the seat.
3. Press the DOWN button (switch) to lower the lift chair to a comfortable seated position.

Follow these simple steps to operate your lift chair from the seated position:

1. Press the UP button (switch) to raise your lift chair to the standing position.
2. Press the DOWN button (switch) to lower the lift chair to a seated position.

Follow these simple steps to recline your lift chair from the seated position:

1. Press and hold the DOWN button (switch) until reclined.
2. Press and hold the UP button (switch) to return to an upright, seated position. Release the button(switch) when the chair reaches a comfortable seated position.

Follow these simple steps to properly stand up from your chair:

1. Press and hold the UP button (switch) to raise your lift chair.
2. Release the button (switch) when the chair reaches a height where you can stand up.

Two Motor Infinite Position Chairs

Certain Serta Perfect Lift Chairs and Serta ComfortLift Chairs come equipped with two motors. This feature allows for the Backs and the Footrest to operate independently of one another.

To operate, please refer to the diagram of the 4-Button Hand Control on Page 18.

There is a corresponding Icon / Picture that corresponds with the function of a specific button.

Serta Infinite Position Chairs provide an added measure of comfort that is tailored to the individual user's comfort preferences.

On occasion, your lift chair may require troubleshooting. The following troubleshooting tips and FAQs should summarize what you need to know about your lift chair. If at any time you do not feel comfortable performing the troubleshooting steps listed in this manual, contact your authorized provider or Serta Perfect Lift Chair/ComfortLift dealer for service. Please have the model number, serial number, and nature of the problem when calling.

FREQUENTLY ASKED QUESTIONS

What if my chair does not operate at all?

- Make sure the external transformer is plugged into a properly wired electrical outlet.
- Check the circuit breaker box connected to the electrical outlet to ensure the outlet is receiving power.
- Ensure the low voltage connection cable is plugged into the external transformer.
- Ensure that all cables are connected properly.

What if my lift chair operates in one direction only?

- Check the up and down buttons or toggle switch on the hand control to make sure they do not stick. If the buttons or switch are sticking in either position, the hand control may need to be replaced or cleaned. Disconnect the hand set and clean with a damp cloth. Allow to completely dry before reconnecting..
- Contact your authorized provider or dealer for further assistance.

What if my lift chair stops during a lifting cycle?

- Your lift chair is equipped with an internal thermal safety shutoff switch located inside the external transformer that prevents the motor control box from overheating. If the thermal shutoff activates, allow the lift chair to remain in a stationary position for 10 minutes to allow the motor to cool, then resume normal operation. If you notice the motor/motors overheating frequently, contact your authorized provider as soon as possible.
- There may have been a power failure and/or there are no batteries in the external transformer or the batteries have no charge. Always make sure there are fresh 9V Alkaline batteries in the external transformer if equipped with battery backup.
- Check the circuit breaker box connected to the electrical outlet to ensure the outlet is receiving power.

What if my chair is rocking from corner to corner after I position the chair?

The floor may be uneven or the carpet may be affecting chair position. A simple adjustment at the leg levelers in the area where the chair is rocking will stabilize the chair. See III. "Your Lift Chair" for instructions on leveling your chair.

Where can I place the external transformer box?

- On the floor away from heat sources in an open, well-ventilated area where there will not be any obstructions.
- On the wall away from heat sources utilizing the optional external transformer wall mount. Refer to the Wall Mount Diagram Product Insert provided with your lift chair.

Where do I find the Serial Number on my lift chair?

You can find the serial number in two locations-one is near the rear of the motor on the steel mechanism, the second is attached to the side of the back frame. The model number for your lift chair is printed below the serial number bar code.

Who do I call for service?

Contact your authorized provider or dealer for service, or Lifestyle Solutions, Inc. +1 (510) 824-6500

Your Serta Perfect Lift/Serta ComfortLift chair will require routine maintenance checks. You can perform many of these checks, but others may require assistance from your authorized provider or dealer. Your new Serta Perfect Lift Chair / Serta ComfortLift will provide you with years of trouble free service by simply following a few easy steps in this guide.

FABRIC CARE

Visually inspect your fabric on a regular basis to look for any pulls or tears. All Serta Lift Chairs are covered with high quality nationally recognized fabric producers. Check with your authorized provider or dealer for the correct cleaning code and follow all instructions. Avoid leaving your chair in direct sunlight for prolonged periods of time.

WARNING! Never allow fabric to come in direct contact with any type of heat source (e.g., a space heater or cigarette). Personal injury or fire damage may occur.



WARNING! Your provider strongly recommends that you do not smoke cigarettes while seated in or using your lift chair, although the lift chair has passed the necessary testing requirements for cigarette smoking. You must adhere to the following safety guidelines if you decide to smoke cigarettes while seated in or using your lift chair.

- NEVER leave lit cigarettes unattended.
- Keep ashtrays a safe distance from the lift chair.
- Always make sure cigarettes are completely extinguished before disposal.

NOTE: Do not use solvent-type cleaners to spot clean. Do not saturate the fabric. Prevent damage to the fabric; do not expose the lift chair to direct sunlight.

ELECTRONICS CARE

- Regularly inspect all wiring harnesses to make sure they are not damaged or frayed.
- If damage is present, unplug the lift chair and contact your authorized provider at once.
- Keep all electronics free from moisture and temperature extremes. **Warranty is limited to indoor residential use.**



WARNING! Even though the lift chair has passed the necessary testing requirements or ingress of liquids, you should keep electrical connections away from sources of dampness, including direct exposure to water or bodily fluids and incontinence. Check electrical components frequently for signs of corrosion and replace as necessary.

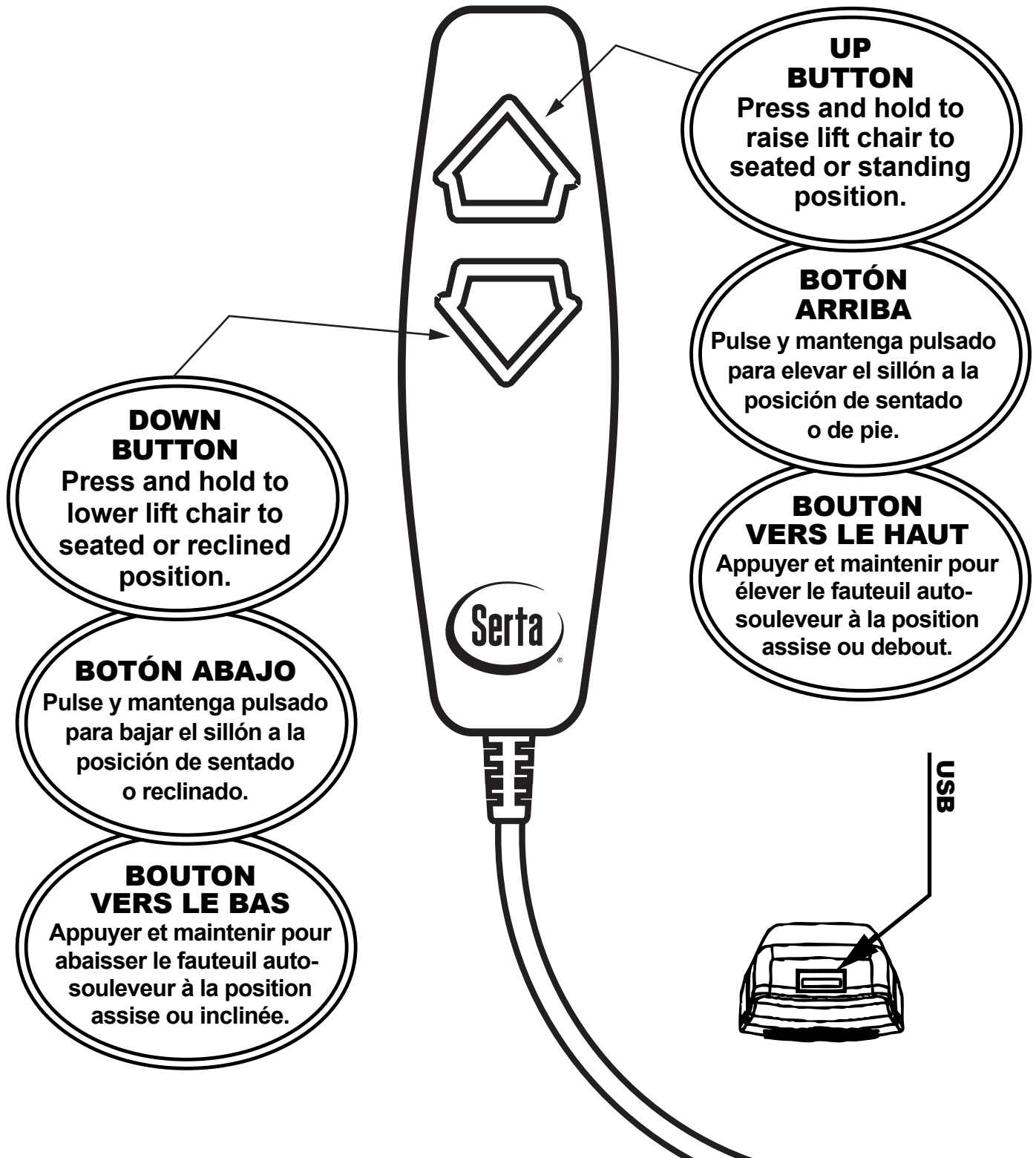
DISPOSAL AND RECYCLING

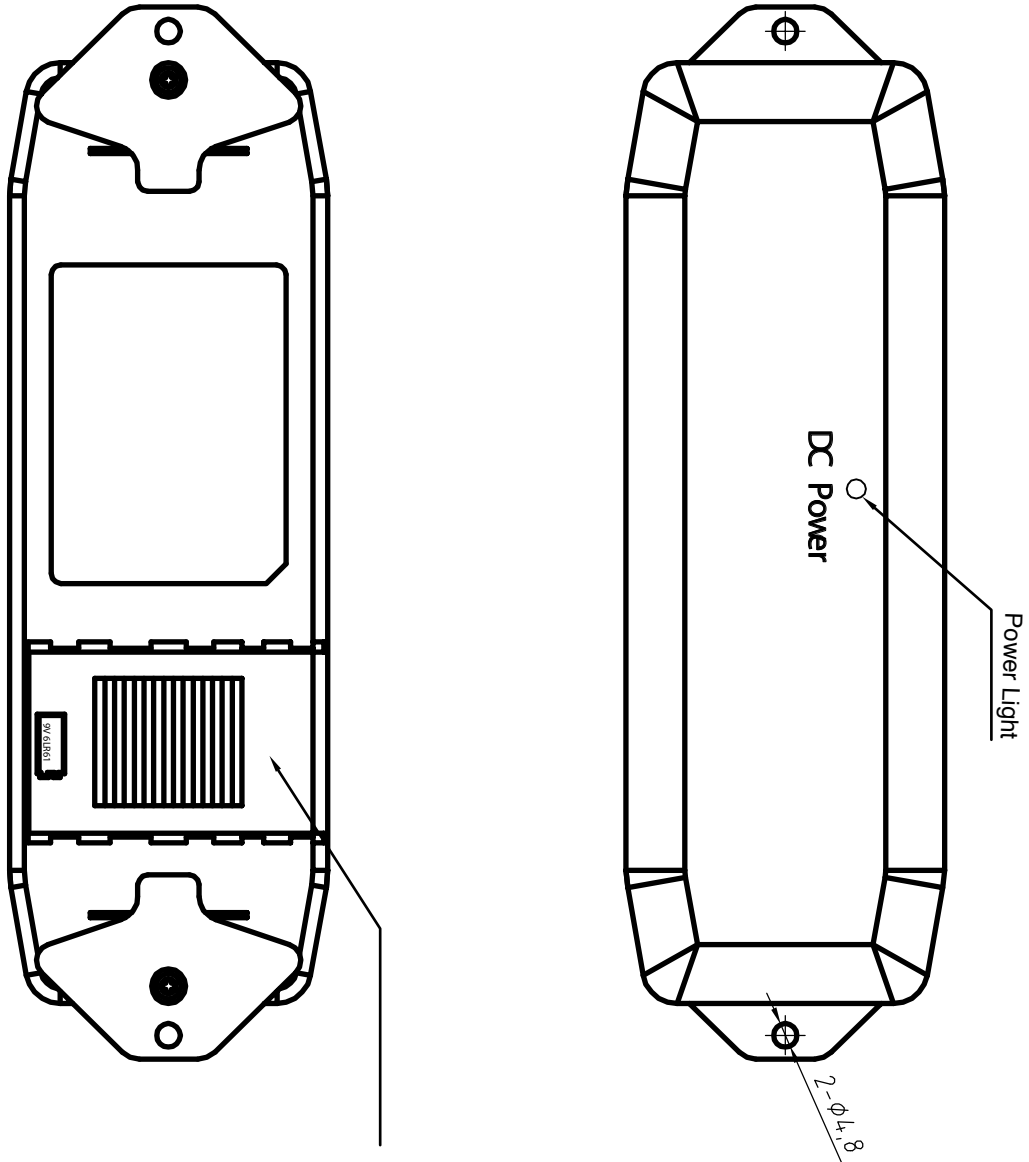
Your lift chair must be disposed of according to applicable local and national statutory regulations. Contact your local waste disposal agency or authorized provider/dealer for information on proper disposal of lift chair packaging, metal frame components, fabric, electronic components, and batteries.



WARNING! Plastic bags are a suffocation hazard. Dispose of plastic bags properly and do not allow children to play with them.

Two Button Hand Controls Operate all 3-Position Serta Perfect Lift / ComfortLift Chairs
(Model Numbers 320, 860, 870, 882, 893, 900 and 920)





It requires
(2) 9V Alkaline
Batteries
(Batteries Not Included)

Four-Button Hand Controls Operate all Infinite Position Serta Perfect Lift / ComfortLift Chairs
(Model Numbers 592 and 872)

